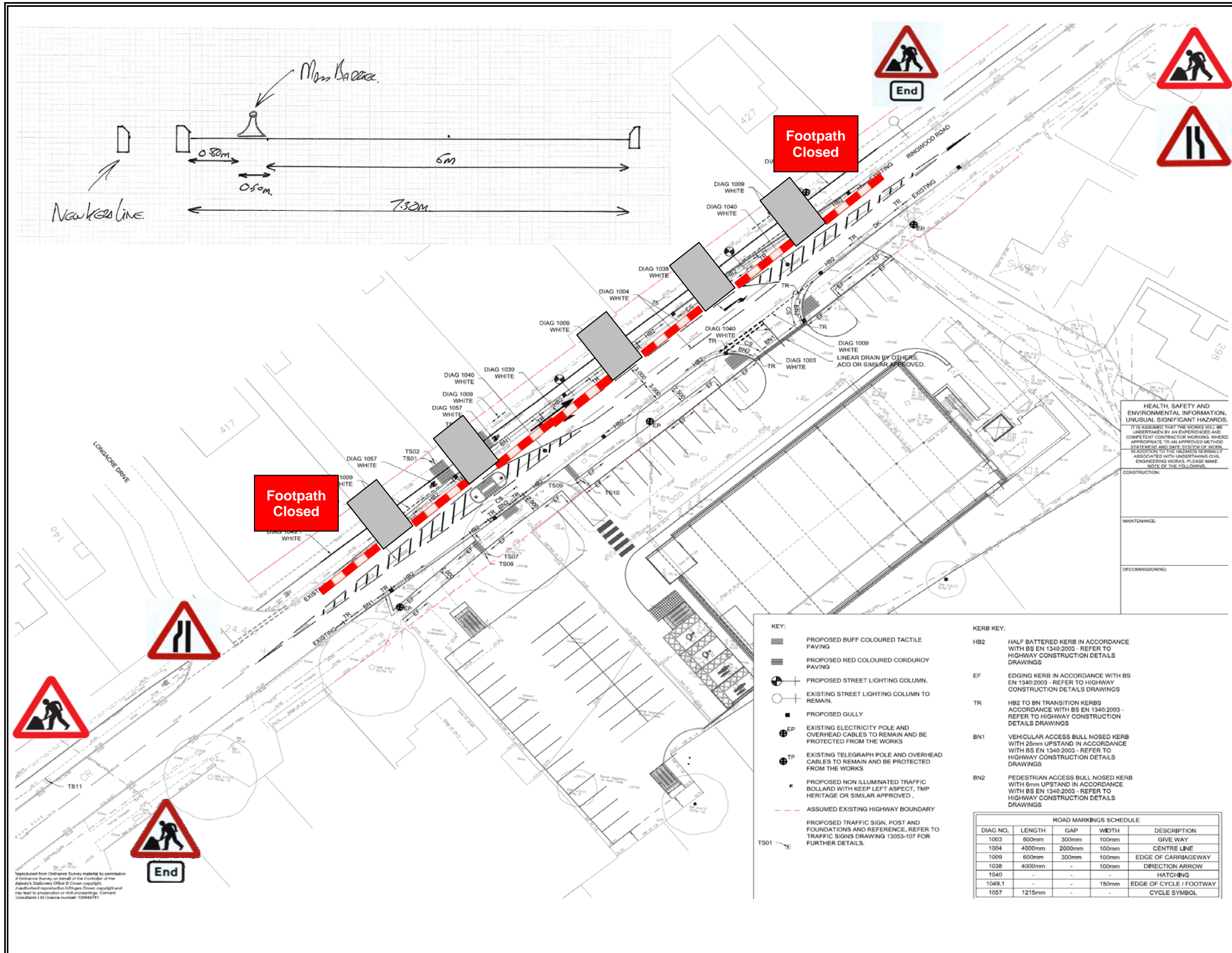


Title	Traffic Management Plans	Number	HC 01	Rev A
Project	Ringwood Road, Ferndown			
Works	Installation of Mass Barrier			
1)	Cone Size : 750 mm			
2)	Sign Size : 750 mm			
3)	Signs To Be Reflectorised			
4)	Steady Beacons To Be Used At Night			
5)	Cone Spacing 5m			



Title	Traffic Management Plans	Number	HC 02	Rev A
Project	Ringwood Road, Ferndown			
Works	Widening Works			
1)	Cone Size : 750 mm			
2)	Sign Size : 750 mm			
3)	Signs To Be Reflectorised			
4)	Steady Beacons To Be Used At Night			
5)	Cone Spacing 5m			

HEALTH, SAFETY AND ENVIRONMENTAL INFORMATION, UNUSUAL SIGNIFICANT HAZARDS.

IT IS ASSUMED THAT THE WORKS WILL BE UNDERTAKEN BY AN EXPERIENCED AND COMPETENT CONTRACTOR WORKING WHERE APPROPRIATE TO AN APPROVED METHOD STATEMENT AND SAFE SYSTEM OF WORKS. IN ADDITION TO THE HAZARDS USUALLY ASSOCIATED WITH UNDISTURBED CIVIL ENGINEERING WORKS, PLEASE MAKE NOTE OF THE FOLLOWING:

CONSTRUCTION:

MAINTENANCE:

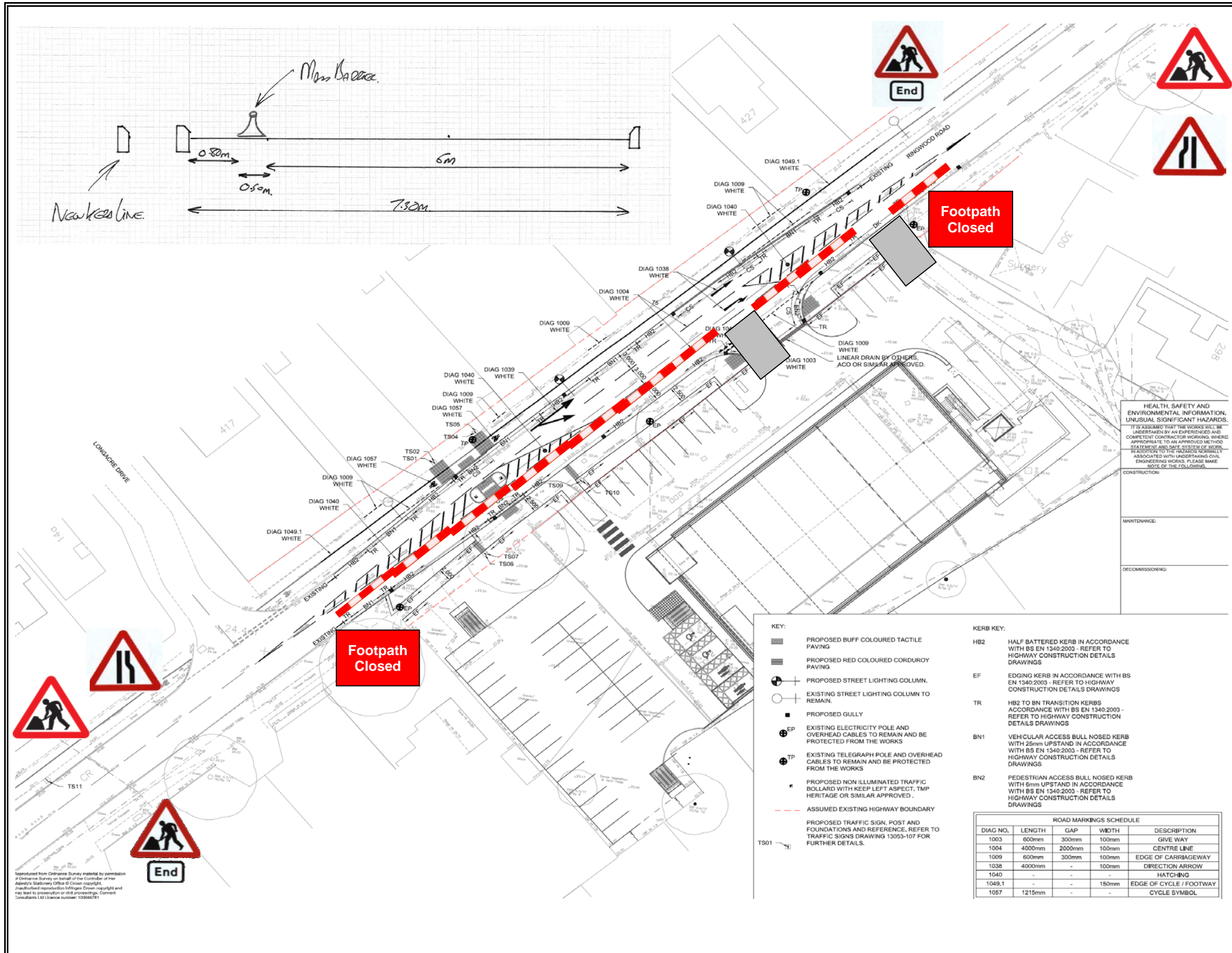
DECOMMISSIONING:

- KEY:**
- PROPOSED BUFF COLOURED TACTILE PAVING
 - PROPOSED RED COLOURED CORDUROY PAVING
 - ⊕ PROPOSED STREET LIGHTING COLUMN.
 - EXISTING STREET LIGHTING COLUMN TO REMAIN.
 - PROPOSED GULLY
 - ⊕ EP EXISTING ELECTRICITY POLE AND OVERHEAD CABLES TO REMAIN AND BE PROTECTED FROM THE WORKS
 - ⊕ TP EXISTING TELEGRAPH POLE AND OVERHEAD CABLES TO REMAIN AND BE PROTECTED FROM THE WORKS
 - PROPOSED NON ILLUMINATED TRAFFIC BOLLARD WITH KEEP LEFT ASPECT, TMP HERITAGE OR SIMILAR APPROVED.
 - - - ASSUMED EXISTING HIGHWAY BOUNDARY
 - ⊕ TS01 PROPOSED TRAFFIC SIGN, POST AND FOUNDATIONS AND REFERENCE, REFER TO TRAFFIC SIGNS DRAWING 13053-107 FOR FURTHER DETAILS.

- KERB KEY:**
- HB2 HALF BATTERED KERB IN ACCORDANCE WITH BS EN 1340:2003 - REFER TO HIGHWAY CONSTRUCTION DETAILS DRAWINGS
 - EF EDGING KERB IN ACCORDANCE WITH BS EN 1340:2003 - REFER TO HIGHWAY CONSTRUCTION DETAILS DRAWINGS
 - TR HB2 TO BN TRANSITION KERBS ACCORDANCE WITH BS EN 1340:2003 - REFER TO HIGHWAY CONSTRUCTION DETAILS DRAWINGS
 - BN1 VEHICULAR ACCESS BULL NOSED KERB WITH 25mm UPSTAND IN ACCORDANCE WITH BS EN 1340:2003 - REFER TO HIGHWAY CONSTRUCTION DETAILS DRAWINGS
 - BN2 PEDESTRIAN ACCESS BULL NOSED KERB WITH 6mm UPSTAND IN ACCORDANCE WITH BS EN 1340:2003 - REFER TO HIGHWAY CONSTRUCTION DETAILS DRAWINGS

ROAD MARKINGS SCHEDULE				
DIAG NO.	LENGTH	GAP	WIDTH	DESCRIPTION
1003	600mm	300mm	100mm	GIVE WAY
1004	4000mm	2000mm	100mm	CENTRE LINE
1009	600mm	300mm	100mm	EDGE OF CARRIAGEWAY
1038	4000mm	-	100mm	DIRECTION ARROW
1040	-	-	-	HATCHING
1049.1	-	-	150mm	EDGE OF CYCLE / FOOTWAY
1057	1215mm	-	-	CYCLE SYMBOL

Reproduced from Ordnance Survey material by permission of Ordnance Survey on behalf of the Controller of Her Majesty's Stationery Office © Crown copyright. Unauthorised reproduction infringes Crown copyright and may lead to prosecution or other proceedings. Connect Consultants Ltd Licence number: 100046781



HEALTH, SAFETY AND ENVIRONMENTAL INFORMATION, UNUSUAL SIGNIFICANT HAZARDS.

IT IS ASSUMED THAT THE WORKS WILL BE UNDERTAKEN BY AN EXPERIENCED AND COMPETENT CONTRACTOR WORKING WHERE APPROPRIATE TO AN APPROVED METHOD STATEMENT AND SAFE SYSTEM OF WORKS. IN ADDITION TO THE HAZARDS USUALLY ASSOCIATED WITH UNDERTAKING CIVIL ENGINEERING WORKS, PLEASE MAKE NOTE OF THE FOLLOWING:

CONSTRUCTION:

MAINTENANCE:

DECOMMISSIONING:

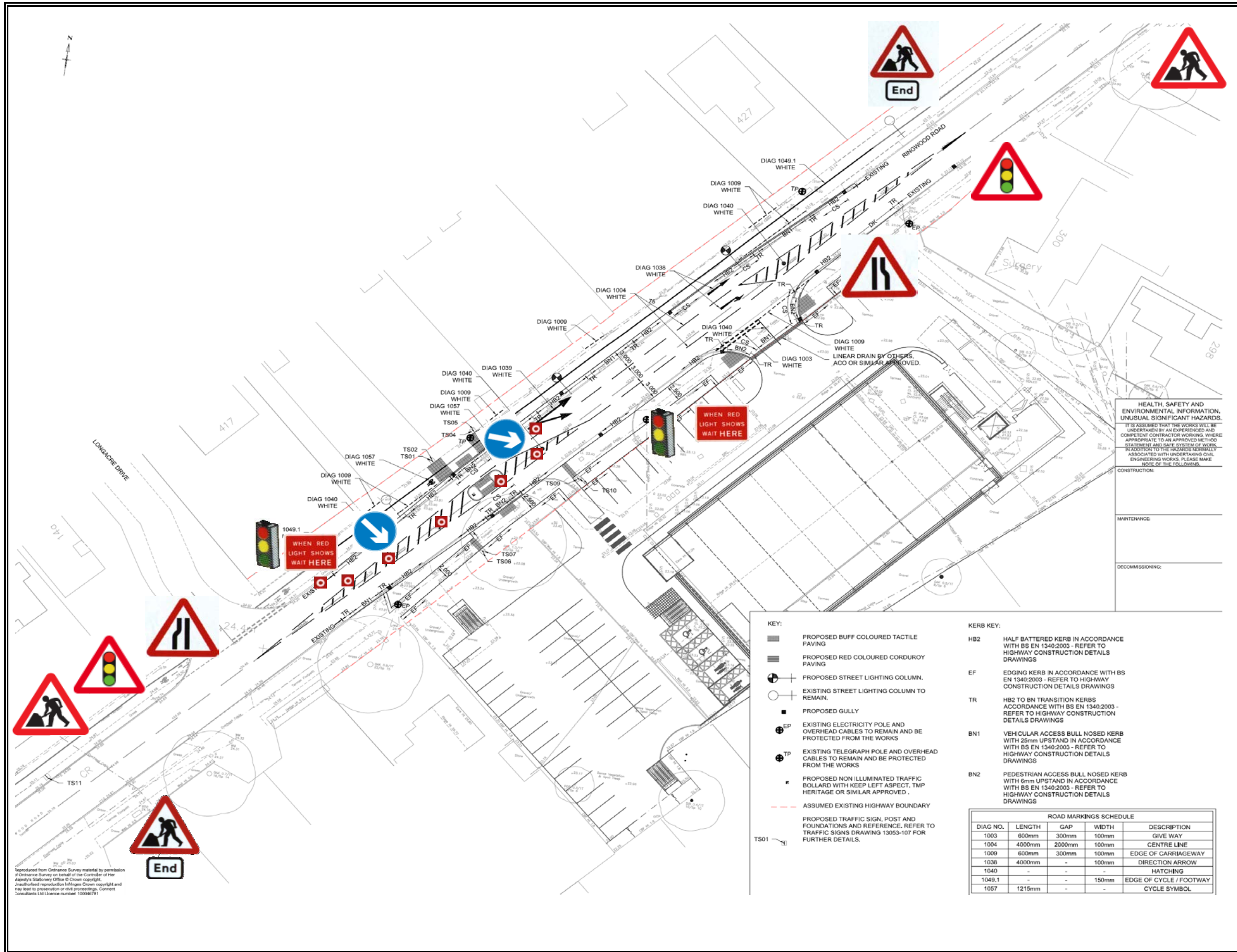
- KEY:**
- PROPOSED BUFF COLOURED TACTILE PAVING
 - PROPOSED RED COLOURED CORDURRY PAVING
 - ⊕ PROPOSED STREET LIGHTING COLUMN.
 - EXISTING STREET LIGHTING COLUMN TO REMAIN.
 - PROPOSED GULLY
 - ⊕ EP EXISTING ELECTRICITY POLE AND OVERHEAD CABLES TO REMAIN AND BE PROTECTED FROM THE WORKS
 - ⊕ TP EXISTING TELEGRAPH POLE AND OVERHEAD CABLES TO REMAIN AND BE PROTECTED FROM THE WORKS
 - PROPOSED NON ILLUMINATED TRAFFIC BOLLARD WITH KEEP LEFT ASPECT. TMP HERITAGE OR SIMILAR APPROVED.
 - - - ASSUMED EXISTING HIGHWAY BOUNDARY
 - TS01 PROPOSED TRAFFIC SIGN, POST AND FOUNDATIONS AND REFERENCE, REFER TO TRAFFIC SIGNS DRAWING 13053-107 FOR FURTHER DETAILS.

- KERB KEY:**
- HB2 HALF BATTERED KERB IN ACCORDANCE WITH BS EN 1340:2003 - REFER TO HIGHWAY CONSTRUCTION DETAILS DRAWINGS
 - EF EDGING KERB IN ACCORDANCE WITH BS EN 1340:2003 - REFER TO HIGHWAY CONSTRUCTION DETAILS DRAWINGS
 - TR HB2 TO BN TRANSITION KERBS ACCORDANCE WITH BS EN 1340:2003 - REFER TO HIGHWAY CONSTRUCTION DETAILS DRAWINGS
 - BN1 VEHICULAR ACCESS BULL NOSED KERB WITH 25mm UPSTAND IN ACCORDANCE WITH BS EN 1340:2003 - REFER TO HIGHWAY CONSTRUCTION DETAILS DRAWINGS
 - BN2 PEDESTRIAN ACCESS BULL NOSED KERB WITH 6mm UPSTAND IN ACCORDANCE WITH BS EN 1340:2003 - REFER TO HIGHWAY CONSTRUCTION DETAILS DRAWINGS

ROAD MARKINGS SCHEDULE				
DIAG NO.	LENGTH	GAP	WIDTH	DESCRIPTION
1003	600mm	300mm	100mm	GIVE WAY
1004	4000mm	2000mm	100mm	CENTRE LINE
1009	600mm	300mm	100mm	EDGE OF CARRIAGEWAY
1038	4000mm	-	100mm	DIRECTION ARROW
1040	-	-	-	HATCHING
1049.1	-	-	150mm	EDGE OF CYCLE / FOOTWAY
1057	1215mm	-	-	CYCLE SYMBOL

Reproduced from Ordnance Survey material by permission of Ordnance Survey on behalf of the Controller of Her Majesty's Stationery Office © Crown copyright. Unauthorised reproduction infringes Crown copyright and may lead to prosecution or civil proceedings. Connect Consultants Ltd Licence number: 100046791

Title	Traffic Management Plans	Number	HC 03	Rev A
Project	Ringwood Road, Ferndown			
Works	Widening Works			
1)	Cone Size : 750 mm			
2)	Sign Size : 750 mm			
3)	Signs To Be Reflectorised			
4)	Steady Beacons To Be Used At Night			
5)	Cone Spacing 5m			



HEALTH, SAFETY AND ENVIRONMENTAL INFORMATION, UNUSUAL SIGNIFICANT HAZARDS.

IT IS ASSUMED THAT THE WORKS WILL BE UNDERTAKEN BY AN EXPERIENCED AND COMPETENT CONTRACTOR WORKING UNDER APPROPRIATE TO AN APPROVED METHOD STATEMENT AND SAFE SYSTEM OF WORKS. IN ADDITION TO THE HAZARDS USUALLY ASSOCIATED WITH UNDISTURBED CIVIL ENGINEERING WORKS, PLEASE MAKE NOTE OF THE FOLLOWING:

CONSTRUCTION:

MAINTENANCE:

DECOMMISSIONING:

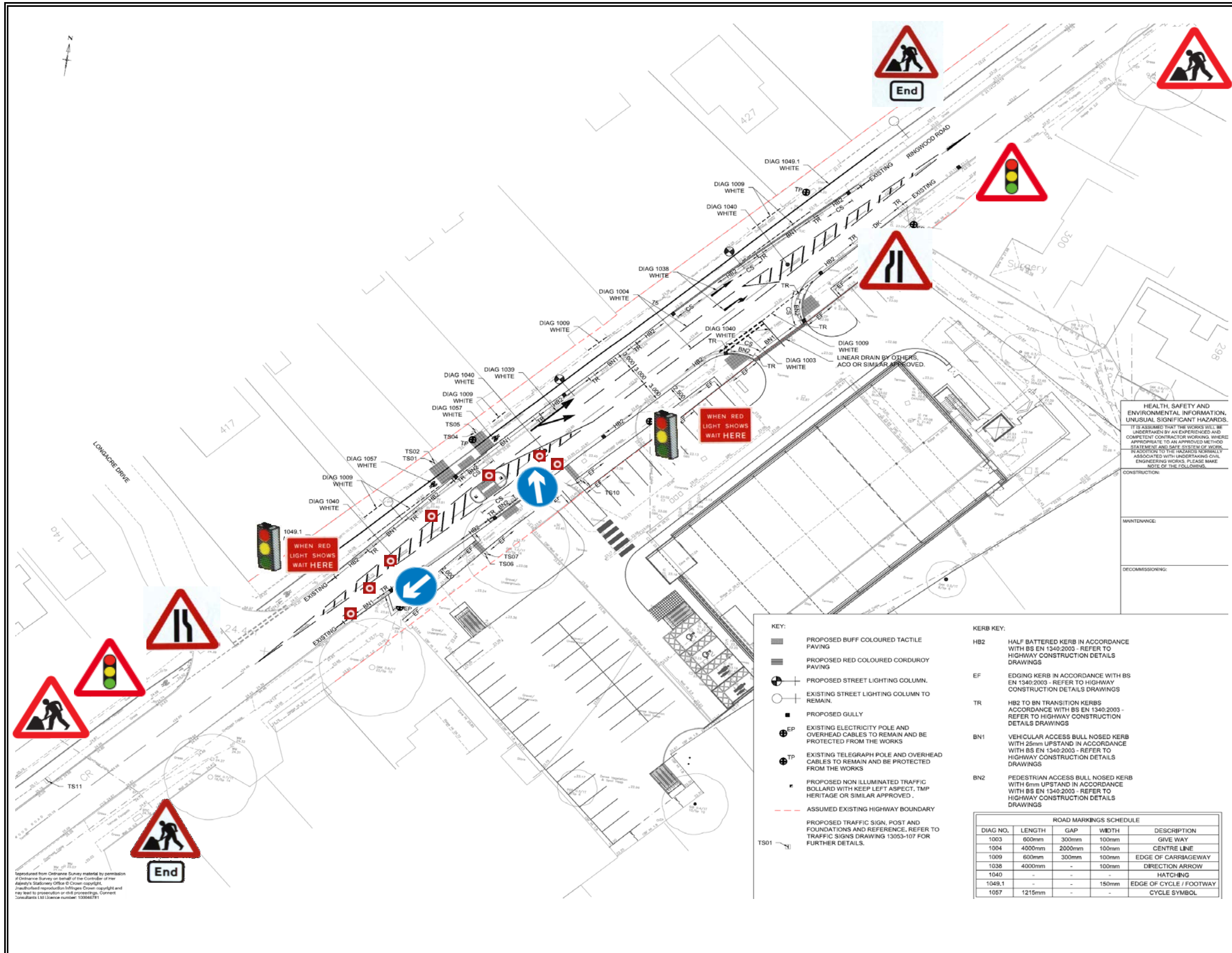
- KEY:**
- PROPOSED BUFF COLOURED TACTILE PAVING
 - PROPOSED RED COLOURED CORDUROY PAVING
 - ⊕ PROPOSED STREET LIGHTING COLUMN.
 - EXISTING STREET LIGHTING COLUMN TO REMAIN.
 - PROPOSED GULLY
 - ⊕ EP EXISTING ELECTRICITY POLE AND OVERHEAD CABLES TO REMAIN AND BE PROTECTED FROM THE WORKS
 - ⊕ TP EXISTING TELEGRAPH POLE AND OVERHEAD CABLES TO REMAIN AND BE PROTECTED FROM THE WORKS
 - PROPOSED NON ILLUMINATED TRAFFIC BOLLARD WITH KEEP LEFT ASPECT. TMP HERITAGE OR SIMILAR APPROVED.
 - - - ASSUMED EXISTING HIGHWAY BOUNDARY
 - TS01 PROPOSED TRAFFIC SIGN, POST AND FOUNDATIONS AND REFERENCE, REFER TO TRAFFIC SIGNS DRAWING 13053-107 FOR FURTHER DETAILS.

- KERB KEY:**
- HB2 HALF BATTERED KERB IN ACCORDANCE WITH BS EN 1340:2003 - REFER TO HIGHWAY CONSTRUCTION DETAILS DRAWINGS
 - EF EDGING KERB IN ACCORDANCE WITH BS EN 1340:2003 - REFER TO HIGHWAY CONSTRUCTION DETAILS DRAWINGS
 - TR HB2 TO BN TRANSITION KERBS ACCORDANCE WITH BS EN 1340:2003 - REFER TO HIGHWAY CONSTRUCTION DETAILS DRAWINGS
 - BN1 VEHICULAR ACCESS BULL NOSED KERB WITH 25mm UPSTAND IN ACCORDANCE WITH BS EN 1340:2003 - REFER TO HIGHWAY CONSTRUCTION DETAILS DRAWINGS
 - BN2 PEDESTRIAN ACCESS BULL NOSED KERB WITH 6mm UPSTAND IN ACCORDANCE WITH BS EN 1340:2003 - REFER TO HIGHWAY CONSTRUCTION DETAILS DRAWINGS

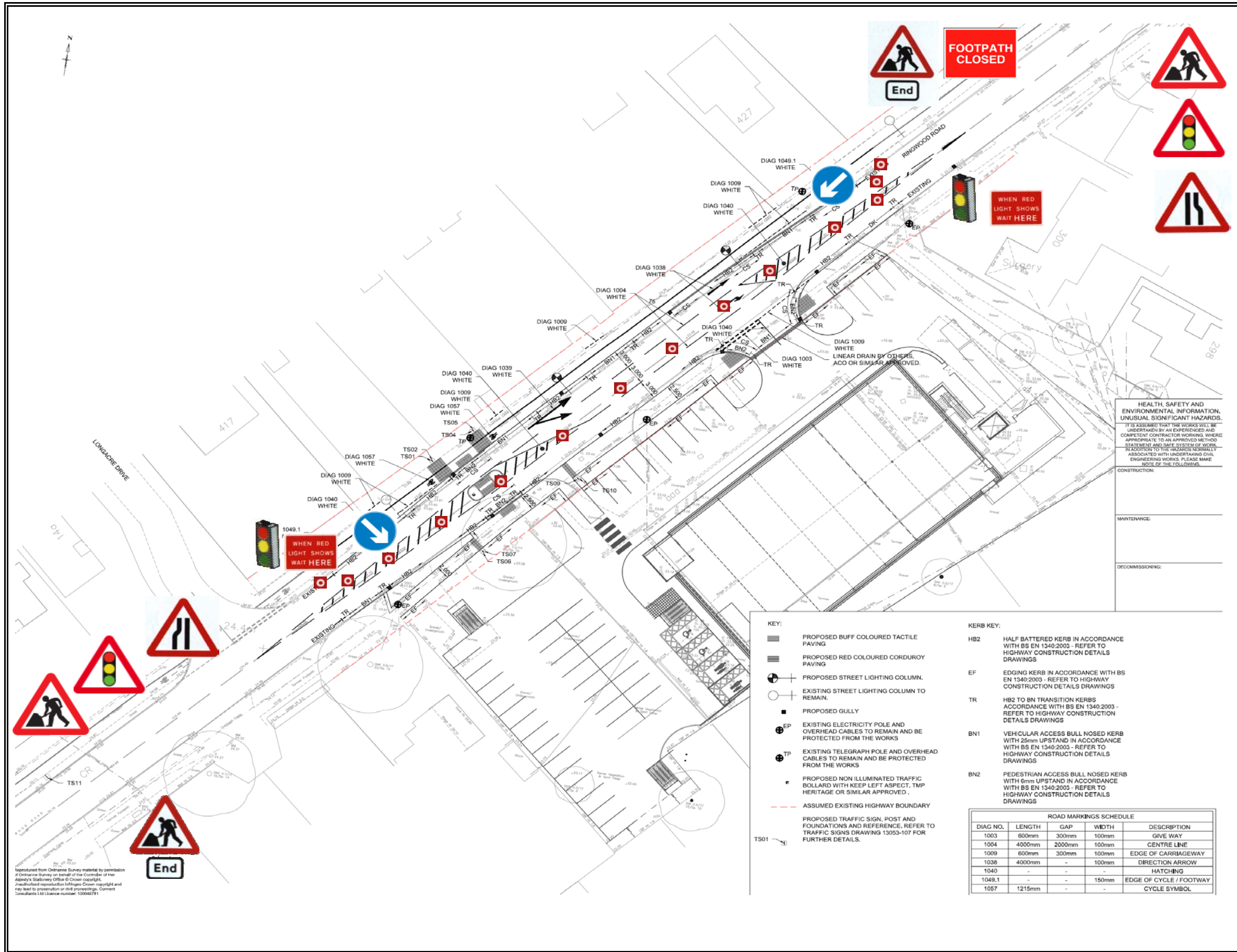
ROAD MARKINGS SCHEDULE				
DIAG NO.	LENGTH	GAP	WIDTH	DESCRIPTION
1003	600mm	300mm	100mm	GIVE WAY
1004	4000mm	2000mm	100mm	CENTRE LINE
1009	600mm	300mm	100mm	EDGE OF CARRIAGEWAY
1038	4000mm	-	100mm	DIRECTION ARROW
1040	-	-	-	HATCHING
1049.1	-	-	150mm	EDGE OF CYCLE / FOOTWAY
1057	1215mm	-	-	CYCLE SYMBOL

Reproduced from Ordnance Survey material by permission of Ordnance Survey on behalf of the Controller of Her Majesty's Stationery Office © Crown copyright. Unauthorised reproduction infringes Crown copyright and may lead to prosecution or civil proceedings. Connect Consultants Ltd Licence number: 100046781

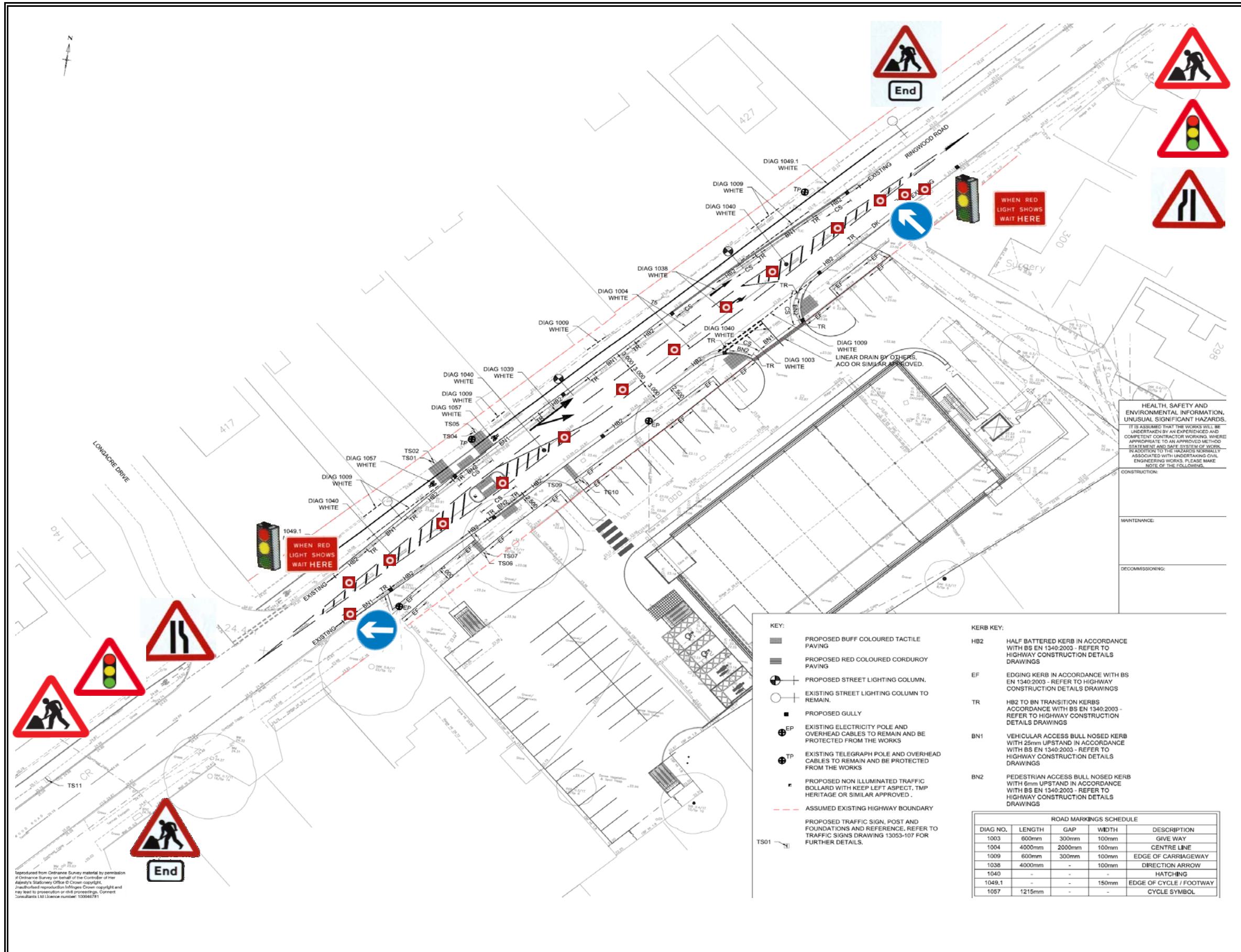
Title	Traffic Management Plans	Number	HC 04	Rev A
Project	Ringwood Road, Ferndown			
Works	Island Construction Night Time			
1)	Cone Size : 750 mm			
2)	Sign Size : 750 mm			
3)	Signs To Be Reflectorised			
4)	Steady Beacons To Be Used At Night			
5)	Cone Spacing 5m			



Title	Traffic Management Plans	Number	HC 05	Rev A
Project	Ringwood Road, Ferndown			
Works	Island Construction Night Time			
1)	Cone Size : 750 mm			
2)	Sign Size : 750 mm			
3)	Signs To Be Reflectorised			
4)	Steady Beacons To Be Used At Night			
5)	Cone Spacing 5m			



Title	Traffic Management Plans	Number	HC 06	Rev A
Project	Ringwood Road, Ferndown			
Works	Night Time Surfacing			
1)	Cone Size : 750 mm			
2)	Sign Size : 750 mm			
3)	Signs To Be Reflectorised			
4)	Steady Beacons To Be Used At Night			
5)	Cone Spacing 5m			



Title	Traffic Management Plans	Number	HC 07 Rev A
Project	Ringwood Road, Ferndown		
Works	Night Time Surfacing		
1)	Cone Size : 750 mm		
2)	Sign Size : 750 mm		
3)	Signs To Be Reflectorised		
4)	Steady Beacons To Be Used At Night		
5)	Cone Spacing 5m		